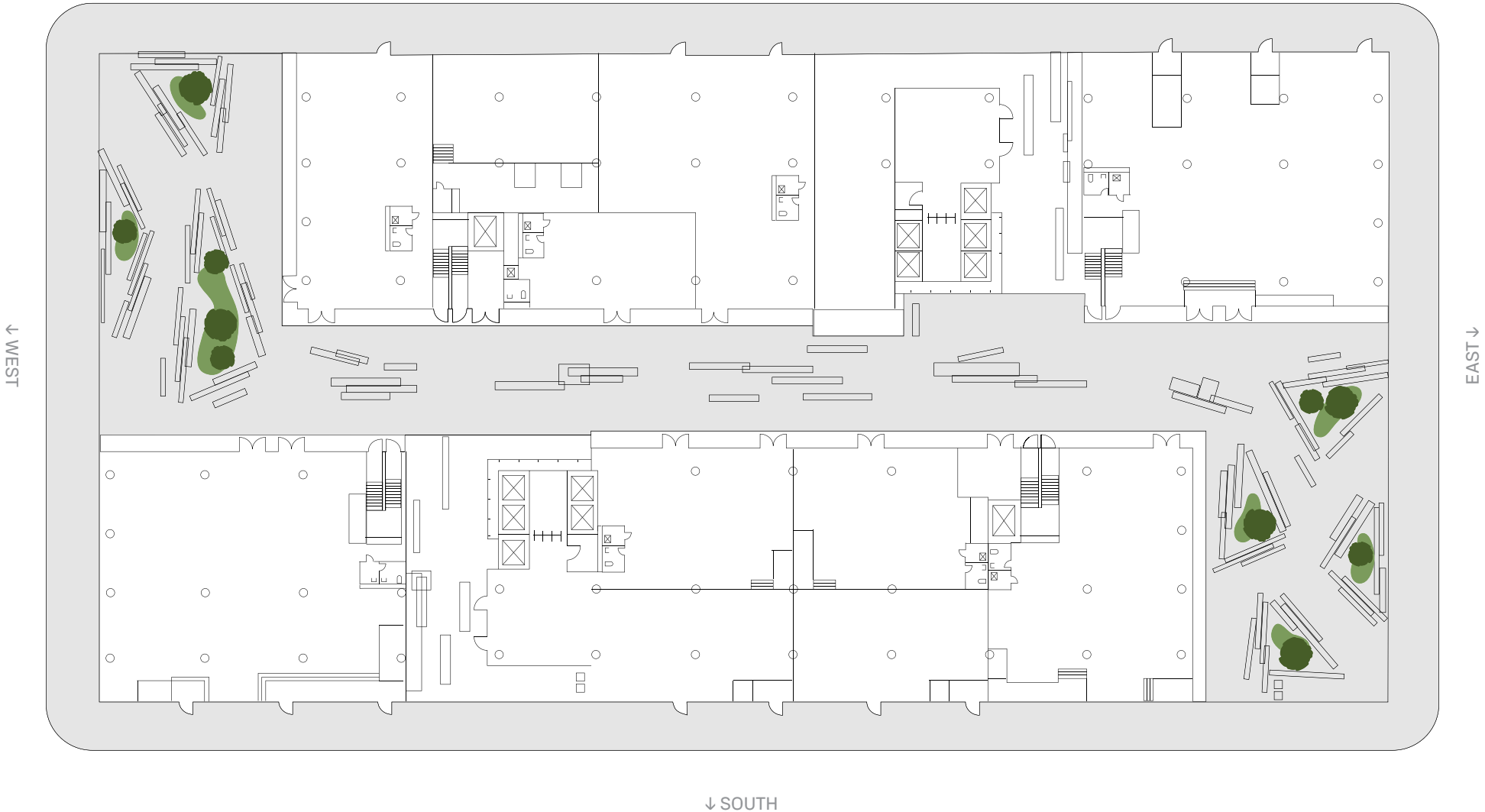


↑ NORTH



# 25 KENT

25 Kent Avenue, Williamsburg Brooklyn, NY 11249

## GROUND FLOOR

Become a neighborhood necessity with ample natural light, views worthy of an extra coffee break, and all the right amenities to help you make your mark.

- + GROUND DETAILS—37,472 SF
- + 22 FT OPEN CEILINGS
- + RETAIL & PUBLIC PLAZAS

[TWENTYFIVEKENT.COM](http://TWENTYFIVEKENT.COM)