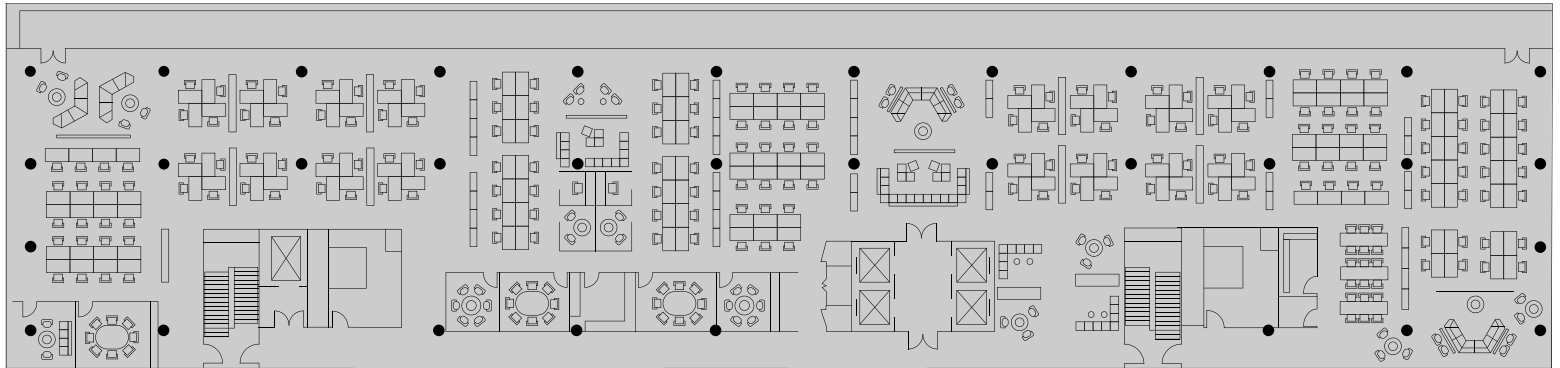


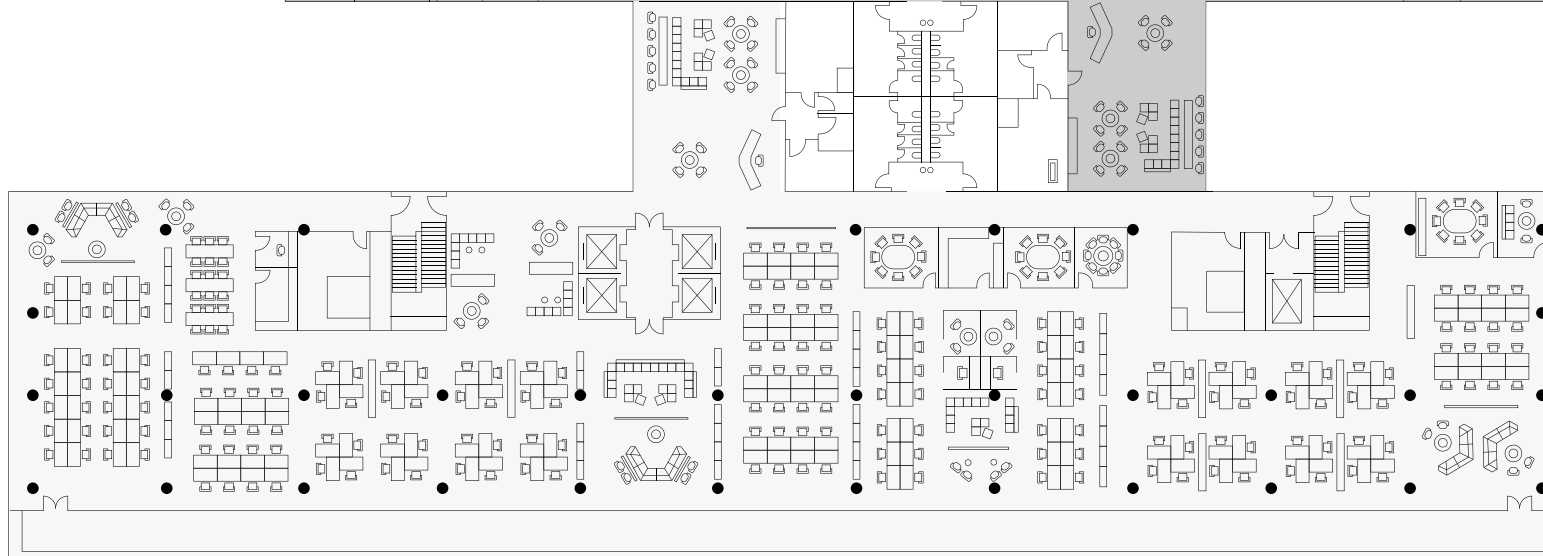
↑ NORTH

TENANT A



↓ WEST

EAST ↓



TENANT B

↓ SOUTH

25 KENT

25 Kent Avenue, Williamsburg Brooklyn, NY 11249

HALF FLOOR

A two-tenant level with half floor occupancy and full-floor identity. Trade ideas, trade lunches—but keep your side, identity, and terrace for yourself.

- + UP TO 279 EMPLOYEES
- + TENANT A — 34,867 RSF
- + TENANT B — 34,867 RSF

TWENTYFIVEKENT.COM