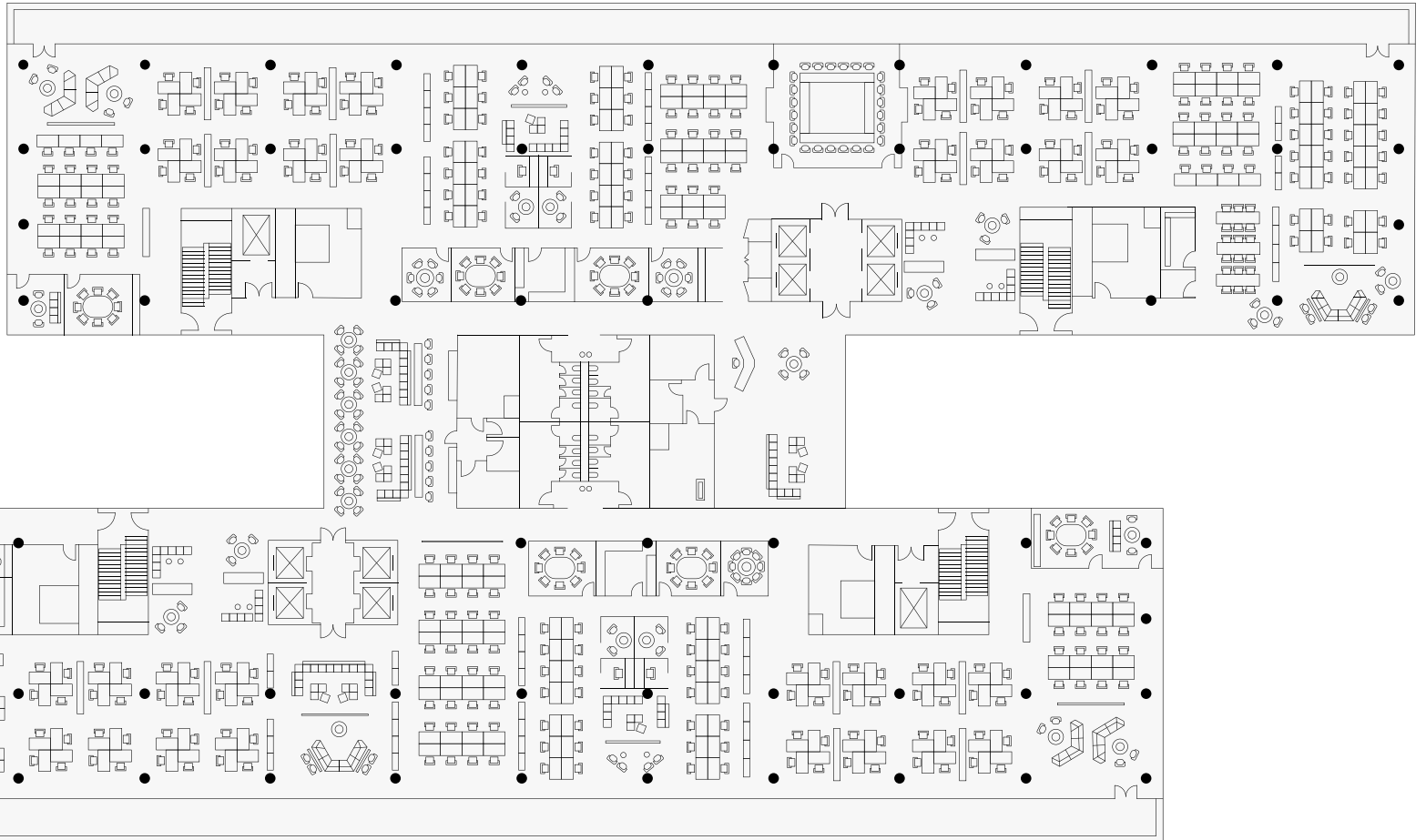


↑ NORTH



↓ SOUTH

25 KENT

25 Kent Avenue, Williamsburg Brooklyn, NY 11249

ENTIRE FLOOR

Office space with ample swivel space for all! Make your mark with dedicated full floor and full building identity and step out in style on your private outdoor terrace.

+ UP TO 558 EMPLOYEES
+ MAIN TENANT — 69,735 RSF

TWENTYFIVEKENT.COM